

LANDMARK ELECTRO PNEUMATIC TECHNICAL SERVICES L.L.C

Port Saeed Building, Al Khabaisi, Dubai,
P.O Box: 87076, U. A .E,



To Be First Natural Choice Of Customer



OIL & GAS



INDUSTRIAL CONSTRUCTION



POWER ENERGIES



E&I ENGINEERING



TRADING E&I EQUIPMENT



MAINTENANCE & SERVICING

Contact: +971 68829398 E-mail: info@lepts.ae Website: www.lepts.ae



ABOUT US

Landmark Electro Pneumatic Technical Services LLC was founded to provide professional engineering solutions for products and services to companies in oil & gas, petro-chemical, power & water sector in UAE with a strong focus on supreme customer service. We have comfortable experience in offering Engineering, procurement, construction, commissioning & maintenance support services with great competency to oil & gas, petro-chemical, power & water industries.

FOCUSED AREAS

- Oil and gas.
- Industrial construction.
- Power Energies.
- E&I Engineering.
- Trading E&I Equipments.
- Maintenance and Servicing.

VISION & MISSION

HSE: We distribute world class safety standards, so everybody can reach to the family safely.

Fiscal responsibility: Because every employee influences our costs, we are all accountable to ensure that we achieve the most cost-effective solutions.

Integrity : we create an environment of trust by saying what we mean and meaning what we say. we are unyielding in our ethics and we take responsibility for our actions.

Accountability: what we committed we will deliver.

Teamwork: We struggle to work mutually with our stakeholders and believe enormous teams can achieve unbelievable results.

Trust : we believe fundamental honesty is the keystone of business.

Customer : The more you engage with customers the clearer things become and the easier it is to determine what you should be doing

QUALITY POLICY

It is the quality policy of the company to provide the project and services for the oil & gas, power and petro chemical and water industries, which meet to exceed the stated and implied need of our customers in this company comply with national and international standards.

Equality , it is the policy of the company to provide training and recourses, through with each and every employee is able to recognize and satisfy the need of the companies and external customers.

ENVIRONMENT HEALTH SAFETY

we are ensuring health safety and environmental protection to our staff, contractor and the client from the hazardous arising from our services . we as a responsible company, shall set HSE management system as the most important responsibility in our business process.



OIL & GAS

- *A60 Fire Rated Cabins*
- *3phase Well Test Separator*
- *Indirect Water Bath Heater*
- *90' Burner Boom*
- *Chemical Injection Pump Skid*
- *Well Head ESD Control Panel*
- *Chemical Injection Mini Package*
- *Gas Booster Package*
- *Pressure Test Pump*
- *Nitrogen Booster*



INDUSTRIAL CONSTRUCTION

- *HVAC System*
- *Electrical*
- *Instrumentation*
- *Fire And Gas System*



POWER ENERGIES

- *Engine Supply And Installation*
- *Generator Installation*
- *Transformer Installation And Testing*
- *Substation And Switch Gear Work*



E&I ENGINEERING

- *Electrical designing and site survey*
- *Instrumentation designing and site survey*
- *pneumatic logic control panel designing*
- *electrical control panel designing*
- *PLC micro logic control panel designing*



E&I

TRADING E&I EQUIPMENT

- *light fitting and small power equipments*
- *E&I cables and accessories*
- *special type of field instruments*
- *pneumatic panel spare parts*
- *F&G equipments*



MAINTENANCE & SERVICING

- *Engine servicing and maintenance*
- *pneumatic control panel modification and servicing*
- *hydrostatic Pressure testing*
- *revamping for the E&I skid equipments*



FIRE RATED CABINS

*E&I Designing
HVAC Designing
F&G Designing
E&I And HVAC Material Supply.
E&I And HVAC Construction Work.
E&I And HVAC Commissioning
F&G Construction Work.
F&G Commissioning*



WELL TEST SEPARATOR E&I DESIGNING

*E&I Designing
E&I Material Supply
ESD Panel Supply
Chemical Injection Pump
Instrument Tubing Work
Electrical Construction
Separator Pressure Test*



WATER BATH HEATER

*E&I Designing
E&I Material Supply
F&G Designing
E&I Construction
Testing And Commissioning For
2 Stage Burner And Water Bath Heater.
10k Psi Pressure Testing For Coil Pipe.*





ENGINE MAINTENANCE AND SERVICING

*Overhauled Engine Has Been Removed
Disassembled and Cleaning Work.
Inspection Carried Out.
Repaired And Testing.
Supply The Genuine Spare Parts.
Annual Maintenance Contracts.*



90' BURNER BOOM

*E&I Designing
E&I Material Supply
Instrument Tubing Work
Electrical Construction
Pipe Spool Pressure Testing
Tube Leak Testing.*



CHEMICAL INJECTION PUMP

*E&I Designing
E&I Material Supply
E&I Construction
Testing And Commissioning
Selection Of Pump.
Skid Pressure Testing .*





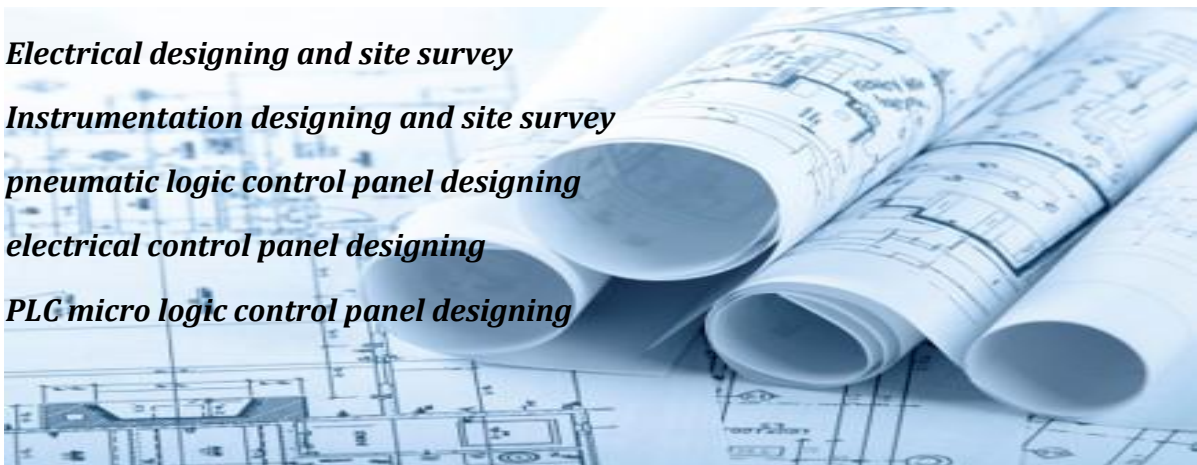
PIPE SPOOL PRESSURE TESTING

*pressure Vessels
pipe spools
skid equipments
pressure hoses.*



E&I ENGINEERING

*Electrical designing and site survey
Instrumentation designing and site survey
pneumatic logic control panel designing
electrical control panel designing
PLC micro logic control panel designing*





WELL HEAD ESD CONTROL PANEL

The emergency shutdown control panel is used to generate signal to pneumatically control the hydraulic actuated flow head and other fail safe hydraulic actuated valve including SSV and SCSSV. ESD system is designed to remote or manually control in response to any leakage equipment fail or other emergency situation.

The pane consist of 30Ltr hydraulic oil reservoir, relief valve ,pressure pump, bladder accumulator, pneumatic logical relays& pressure gauge and 3ESD logic included remote and local pull station, HI-LOW pilot & fusible bulb.

APPLICATION

All well test SSV valve shutdown operations.

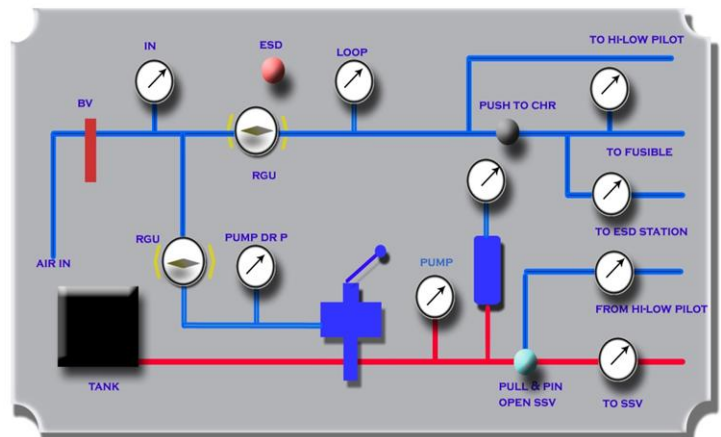
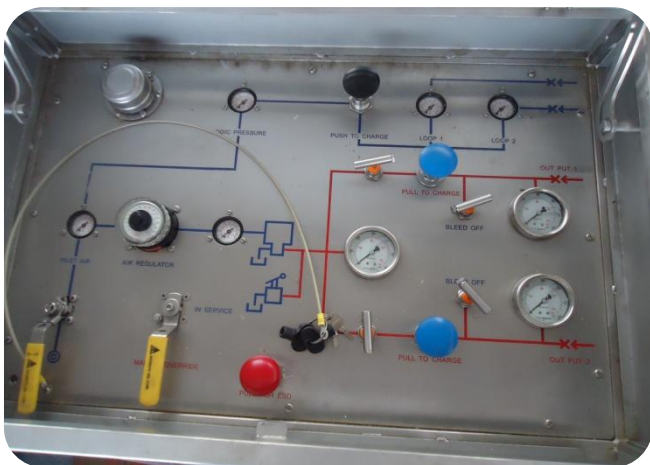
FEATURES

Operation area : class 1 Div. 1, group C and D
Skid and enclosure : SS
Air supply : clean & dry air 100 to 200 psig.
Hydraulic circuit : 3000 PSIG or 6000PSIG.
Hydraulic pump: manual & pneumatic type.

EXTRA ITEM PRIOR TO ORDER

Pull station .
SSV hydraulic hose
Pneumatic air hose
Fusible bulb
HI-LOW pilot.

PANEL FRONT OPERATING VIEW





CHEMICAL INJECTION PACKAGE.

The pump is used to inject the chemical like methanol, glycol, de-emulsifier into the well through data header. Pump material designed according to chemical. Pump outlet pressure is higher than the well pressure.

APPLICATION

All well test operations
High pressure process pipelines

FEATURES

Air regulator
Air supply : clean & dry air 100 to 200 psig.
Pressure gauge
Pressure safety valve
Enclosure : stainless steel

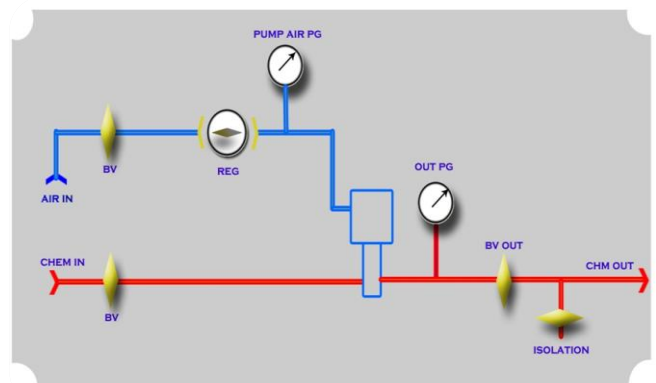
EXTRA ITEM PRIOR TO ORDER

High pressure hose

*MODEL	FLOW RATE MINIMUM		FLOW RATE MAXIMUM		W.P MAXIMUM	
	(USG/H)	(L/H)	(USG/H)	(L/H)	PSIG	(BARG)
CP-GX15	0.02	1.46	1.46	5.53	3500	241.32
CP-1250-B	0.002	0.007	8.0	30.28	12000	827.4
CP-1500-B	0.002	0.007	36.04	136.41	15000	1034
CP-6212	1.8	6.8	58.0	219.5	10000	689

* All model have various type of flow rate and pressure type is available as per the customer requirements

PANEL FRONT OPERATING VIEW





GAS BOOSTER PACKAGE

The gas booster system provide a compact, portable source for increasing gas pressures. These air driven booster system fully tested. The gas booster system required no electrical power.

Gas booster system are capable of compressing most gases up to 20000psig. All hazardous gases are modified to ensure vent port are piped to common vent connection,

APPLICATIONS

- Leak test of pressure components
- Gas charging accumulators
- pressurizing gas cylinders
- Gas assist injection moulding

FEATURES

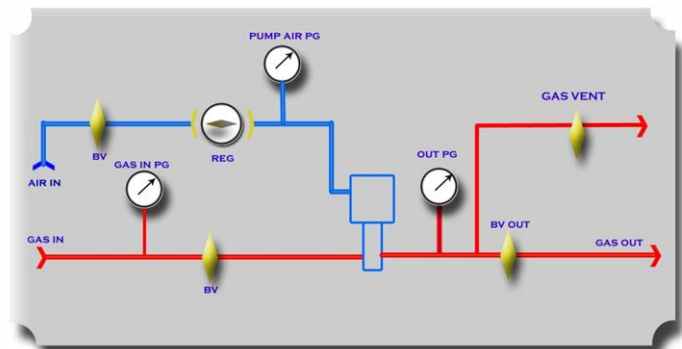
- Air regulator
- Air supply : clean & dry air 100 to 200 psig.
- Pressure gauge
- Pressure safety valve
- Enclosure : stainless steel
- Pressure safety pump cut off switch
- Gas common valves

EXTRA ITEM PRIOR TO ORDER

- High pressure hose

*MODEL	MIN. SUCTION PRESSURE	MAX. OUTLET PRESSURE
	PSIG	PSIG
HAS-AG-15	50	2250
HAS-AGD-15	50	5000
HAS-AGD-75	250	12000
HAS-AGD-102	100	15000
HAS-AG-152	250	20000

PANEL FRONT OPERATING VIEW





PRESSURE TEST PACKAGE

The water pressure test system provide a compact, portable source for increasing water out pressures. These air driven booster system fully tested. The pressure test system required no electrical power.

Water pressure test system are capable of compressing up to 20000psig.

APPLICATION

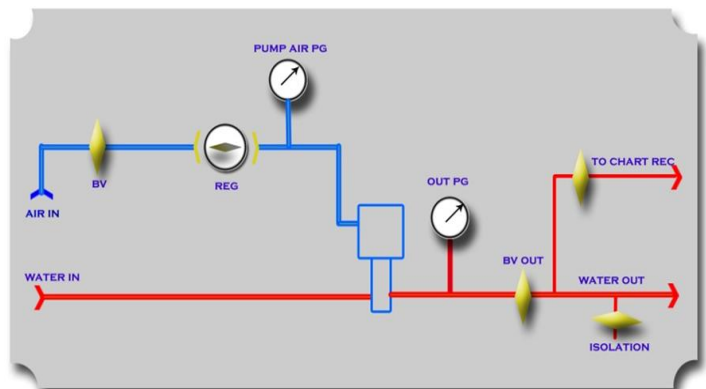
Testing for the pressure components
Pressure testing for all type of pipe spools
Pressure testing for all type of the vessels

FEATURES

Air regulator
Air supply : clean & dry air 100 to 200 psig.
Pressure gauge
Pressure safety valve
Enclosure : sane less steel
Pressure chart recorder
single pump type and dual pump high low rate also available.

*MODEL	FLOW RATE MAXIMUM	WORKING PRESSURE MAXIMUM	
	l/min	BARG	PSIG
MAX-G-15D	19.84	150	2175
MAX-G-35D	7.74	400	6800
MAX-G-100DS	2.78	1050	15225
MAX-G-150DS	2.10	1450	21025

PANEL FRONT OPERATING VIEW



* All model have various type of flow rate and pressure type is available



NITROGEN BOOSTER

The nitrogen booster system provide a compact, portable source for increasing gas pressures. These air driven booster system fully tested. The gas booster system required no electrical power.

Nitrogen booster system are capable of compressing up to 5000psig.

APPLICATION

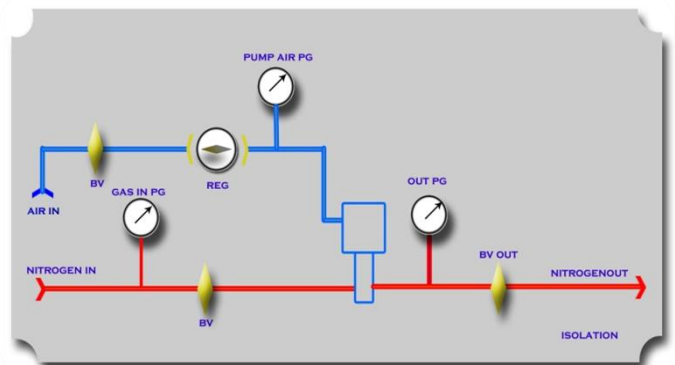
- Testing for the pressure components
- charging the accumulators
- pressurizing shock struts
- Boosting pressure from nitrogen generators
- Boosting pressure from vaporized liquid nitrogen
- Tire filling

FEATURES

- Air regulator
- Air supply : clean & dry air 100 to 200 psig.
- Pressure gauge
- Pressure safety valve
- Enclosure : stainless steel
- Pressure safety pump cut off switch

*MODEL	MIN. SUCTION PRESSURE	MAX. OUTLET PRESSURE
	PSIG	PSIG
HAS-AG-15	50	2250
HAS-AGD-15	50	5000

PANEL FRONT OPERATING VIEW





MUD PUMP E&I

SINGLE POINT PRESSURE GAUGE

Single Pointer Pressure Gauge systems help detect mud pump operation problems, such as washed out drill pipes. This convenient gauge can be mounted in a weight-indicator box, on the driller's console, or on the mud pump.

The system consists of a 6-inch **Pressure Gauge**, a **Gauge Protector**, and a high-pressure **Hose**.



- ❑ Standard capacities include:
 - 3,000, 5,000, 6,000, 10,000, and 15,000 psi
 - 210, 350, 420, 700, and 1,000 kg/cm²
- ❑ Also available in kPA, MPa, and BAR capacities
- ❑ Durable 517-152 Gauge Protector mounts with 2-inch NPT sub
- ❑ Standard 50-foot hose, with other hose lengths available



COMPOUND POINTER PRESSURE GAUGE

DUAL POINTER PRESSURE indicator systems deliver ACCURATE MEASUREMENTS for MUD, cementing, acidizing, and FRACTURING operations

Compound Pointer Pressure Gauge systems accurately measure and display pump pressures for downhole cementing, high-pressure hydraulic fracturing, or acidizing oil pay operations.

A standard pointer provides a full 360° sweep of the dial, and a vernier pointer offers 4 to 1 resolution for indicating even small pressure changes.

The system consists of a 6-inch Pressure Gauge a Gauge Protector, and a high-pressure Hose



- Standard capacities include:
 - 4,000, 8,000, 12,000, and 16,000 psi
 - 400, 800, 1200 kg/cm²
 - 40, 80, 120 MPa
- Durable 517-152 Gauge Protector mounts with 2-inch NPT sub
- Operational in temperature ranges of - 50° to +150° F (- 45° to +65° C)
- Accuracy rate of $\pm 1.0\%$ of full indication
- Available in box-mount and panel-mount configurations
- Standard 50-foot hose, with other hose lengths available



RPM ROTARY & SPM PUMP SPEED

RPM Rotary Speed Indicator System

provides exceptionally accurate rotary speed measurements — enabling the driller to optimize drill speed for maximum efficiency. The system includes the **Gauge** and a **Generator** that powers the system.



SPM Pump Speed Indicator System provides quick, easy-to-read pump speed measurements information the mud pressure gauge does not deliver. The system includes the **Gauge** and a **Generator** that powers the system.



- ❑ Available in a variety of capacities, with maximum capacities of 1000 RPM and 500 SPM (special capacities available upon request)
- ❑ Available in panel-mounted or box-mounted configurations





PUMP STROKE COUNTER /RATE METER

Pump Stroke Counter/Rate Meter displays both the total number of strokes and the strokes per minute for two mud pumps up to 1,024 strokes per minute for each pump.

Push buttons conveniently located on the front of the instrument make it easy for the operator to reset each pump count. A stainless steel enclosure ensures reliable readings even in the toughest operating environments.



- Displays total number of strokes—from 0 to 9,999
- Displays number of strokes per minute—from 7.5 to 1,024
- Low current consumption — approximately 100 uA in standby mode
- LCD display height: 0.7 inch
- Operates in temperatures from – 4° to 140° F (– 20° to 60° C)
- Size: 7-7/8 H x 7-7/8 W x 3-inch D
- Weight: 4 pounds
- Available model that meets Class 1, Division 1 standards
- Displays strokes for 2 mud pumps (Optional model available that displays strokes for 3 mud pumps)